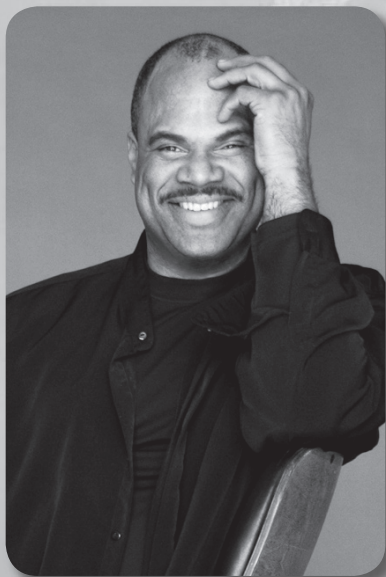


One Voice Mixed Chorus annual cabaret and auction

Spring Fever

**Saturday April 17, 2010
Zuhrah Shrine Center**



**Hosted by
T Mychael
Rambo**

www.ovmc.org

*Building community
and creating social change
by raising our voices in song.*

**One
Voice**
MIXED CHORUS
Minnesota's GLBTA Chorus



Welcome

Welcome to the Spring Fever Cabaret! We have a jam packed musical extravaganza this year, with another cast of amazing performers. As the musical director and producer for the show, I am often asked "is there a theme for the show?" I feel themes define and limit our musical choices, and I want to be open to explore any and all musical genres. One of my favorite parts of the show is discussing songs with the performers, and landing on the perfect song to showcase their unique talent. Sometimes we find a song right away, and sometimes it takes weeks of bouncing ideas back and forth to find just the right song!

The funds raised tonight will be used to support One Voice Mixed Chorus' mission, including its **OUT in Our Schools program**. You will hear more about their important community outreach work tonight. In honor of the chorus' work in the schools, we have guest appearances by Kermit the Frog and a talented young performer, Nathaniel Irwin, who is a senior at Minnetonka High School.

I want to thank my first piano teacher....my mom. She's in the audience tonight and has been my lifelong musical inspiration. I almost quit playing the piano.... twice, but she gently talked me into sticking with it. Thanks mom... and thanks to all of you for your support of live music!



Shannon Pierce
Show Producer and Musical Director



Production & Staff

PRODUCTION

| | |
|---------------------------|---|
| Producer/Musical Director | Shannon Pierce |
| Musical Arrangements | Shannon Pierce, Roger Grupp, Dean Menten |
| Lighting Design | Ross Gish |
| Audio | John Brown |
| Stage Management | David Ulrich |
| Assistant Stage Mgmt. | Nicole Guentzel, Ashley Marks, Bethany Stephens, Kirstie Berg |
| Follow Spot | Tim Keller |
| Event Chairs | Cathy Sherwin, Owen Hand |
| Graphic Design | James Gottfried, Karen Muleski |
| Webmaster | James Gottfried |
| Auction | Todd-Allen Hamilton, James Gottfried |
| Table Captain co-chairs | Mary Lou Steeden, Lousene Hoppe |
| Ticketing | Brad Hanson |



Building community
and creating social change
by raising our voices in song.

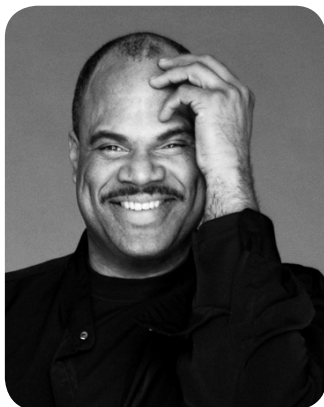
STAFF

| | |
|-------------------------------|------------------------|
| Artistic & Executive Director | Jane Ramseyer Miller |
| Accompanist | W. Bryce Hayes |
| Development & PR Manager | Scott Chamberlain |
| Operations Manager | Tom Becker |
| OVation Coach | Randi Grundahl Rexroth |

One Voice Mixed Chorus
732 Holly Ave, Suite Q
St. Paul, MN 55104-7125
Phone: 651-298-1954
info@ovmc.org
www.ovmc.org

Special thanks to all our volunteers! Katrina Johnson, Robin Keck, Kevin Saltzer, Lousene Hoppe, Marjorie Siegel, Sonya Boeser, Linda Alton, Kathleen Remund, Sarah Bizek, Duane Dial, Ari Edes, Marylou Steeden, Joseph Harriman, Lisa Mendel, Jim Stratton, Rachel Hultman, Cynthia Hopper, Doug Munro, Laura Watson, Dick Van Duesen, JD Stocksett, Martha Bently, Caro Smith

Cabaret Personnel



T Mychael Rambo

Master of Ceremonies

Emmy Award winning actor, vocalist and arts educator T Mychael Rambo is an affiliate professor in the Theatre Arts and Dance Department at the University of Minnesota. T. Mychael has performed principle roles at Penumbra Theatre (*Black Nativity*, *Piano Lesson*, *Get Ready*), Guthrie Theatre (*Crowns*, *Caroline or Change*) in addition to making an indelible name for himself performing at: Illusion Theatre, Minnesota Opera, Ordway Center for the Performing Arts, Children's Theatre, Mixed Blood Theatre, Park Square Theatre and Hey City Theatre. He's shared his talents in local and national television commercials, feature films, radio and television programming as well as on stages nationally and abroad. Most recently he received the 2009 Sally Award in Arts Education and had the great honor of singing the national anthem for President Barack Obama.



Shannon Pierce

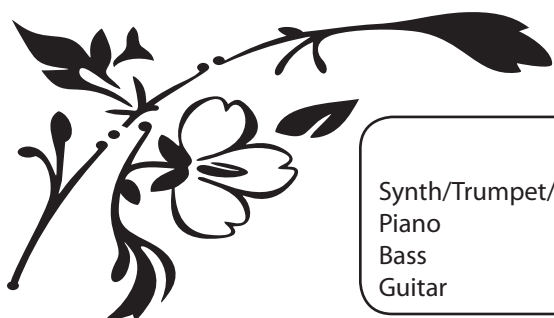
Producer/Musical Director/Conductor Shannon spent the first 15 years of her career in the entertainment industry, working as the Entertainment Manager for Valleyfair Amusement Park, as well as Camp Snoopy in Mall of America, where she wrote and produced over 60 shows! She spent the next 5 years at Jack Morton Worldwide, an international event company. She currently owns and operates Stagetime Productions, an event management and consulting company. She produces over 25 events a year, with a heavy concentration of non-profit clients. Shannon serves on the Foundation IX board. She holds a degree in music and is an accomplished musician and musical arranger. In addition to playing the drums and the piano, she also plays trumpet and is the horn arranger in the Roxxy Hall Band, an 8 piece all woman rock and roll band.



W. Bryce Hayes

Pianist/Vocal Director

W. Bryce Hayes maintains an active career as conductor, teacher, church musician, pianist, accompanist and singer. He received a Bachelor of Music degree in music education summa cum laude from Westminster Choir College and a Master of Music degree in Choral Conducting from Temple University. Bryce is currently pursuing a Doctor of Musical Arts degree in conducting from the University of Minnesota, and serves as the Choral Director at Woodbury United Methodist Church. Prior to joining One Voice, Bryce served as the director of the Cantores ensemble from The Princeton Girlchoir and the director of Upper School Choral Music at Princeton Day School in Princeton, New Jersey. Bryce was recently honored by receiving the Elaine Brown Leadership Award for his commitment to improving the community through choral music.



Musicians

| | | | |
|-------------------------|----------------|-----------|-------------|
| Synth/Trumpet/Conductor | Shannon Pierce | Drums | Brett Smith |
| Piano | W. Bryce Hayes | Trumpet | Tim Hoffman |
| Bass | Jane Aleckson | Tenor Sax | Sue Orfield |
| Guitar | Paul Pederson | Trombone | Dean Menten |



Spring Fever Show Flow

Jump Jive 'n Wail • Lori Dokken
Help! I'm Turning Into My Parents • Jewel Tones
Lido Shuffle • Andy Kuula
Just the Way You Are, Hello Heterosexuals Hello • OVation
Taylor the Latte Boy • Emily Tinawi
For Good • Tom Larson
The Sound of Music - Abbreviated • Jody McCormick
And the World Goes Round • Tracie Hodgdon
Otto Titsling • Anita McColley
Beyond the Sea • Les Bendtsen
Supercalifragilisticexpialidocious, Zip-A-Dee-Doo-Dah • One Voice Mixed Chorus



INTERMISSION

For Once in My Life • T Mychael Rambo
Built for Comfort • Darcy Juhl
Bein' Green • Rachael Kroog
Purpose • Nathaniel Irvin
Last Dance • Jane Plank
Maybe This Time • Holly Schroeder
Jersey Boys Medley • Craig Swygman
Higher and Higher • Finale



OUT In Our Schools

"This is so important for the students to see and experience. I have a student who I suspect hasn't figured out yet that he is gay, and I can't imagine trying to navigate that experience in this setting. I have no doubt you shaped or even saved a life today." - Paula Boe, teacher at Humboldt Junior High

For 12 years, One Voice has tackled the problem of bullying and homophobia in our communities by performing **OUT in Our Schools**, our annual educational outreach concerts at inner-city schools in the Twin Cities. This year, we sing at Wellstone Elementary and Community of Peace Academy in St. Paul, Minnesota.

Our goal is to present positive role models of GLBT individuals and to challenge the stereotypes that often lead to bullying in our schools. Over the years we've changed the lives of students in more than 30 schools (reaching nearly 1,400 students at last year's concerts alone!) and helped build understanding and respect across differences.





Cabaret Performers



LES BENDTSEN

Les's solo career began at age 5 when he sang "Baby Face" for twenty women at a baby shower. It's gone steadily downhill since then – until tonight! Les is in his 26th season as a vocalist with the Minnesota Chorale, the principal chorus of the Minnesota Orchestra; he has sung under the direction of such renowned conductors as Sir

Neville Mariner, Bobby McFerrin, Osmo Vänskä, and Doc Severinsen. Les also serves as President of the Chorale's Board of Directors.



LORI DOKKEN

Lori Dokken, a veteran of Minneapolis/St. Paul cabaret performance; a producer, pianist, vocalist and arranger, she has worked with or opened for such notables as: Bobby McFerrin, Beatrice Arthur, Jennifer Holiday, Eartha Kitt and Tony Bennett. Lori breaks all the rules yet manages to deliver the evening's fare on a silver platter.



TRACIE HODGDON

Tracie has appeared in many-a production at the Bloomington Civic Theatre including *Mame*, *Cabaret*, and *The Full Monty*. She recently closed *Anything Goes* with River Valley Theatre Company. She sits on the board of the Theatre of the Cheshire Cat, is a founding member of the Twin Cities Cabaret Artist's Network, and performs with

Neo-Cabaret. Tracie has also performed at the History Theatre in St. Paul and will be appearing in her first Guthrie production next fall. Her first play, *Sanctuary*, was accepted to the Great Plains Theatre Conference 2009 in Omaha.



NATHANIEL IRVIN

Nathaniel Irvin has been performing in the Twin Cities and across the country since the age of seven. Some of his favorite recent productions include *The Scarlet Pimpernel* (Chauvelin), *Into the Woods* (Baker), *South Pacific* (Emile de Becque), and *Twilight of the Gods* (David) with Minnetonka Theatre. Nathaniel has performed with the Guthrie

Theater, the Chanhassen Dinner Theatres, The Children's Theatre Company, the Houston Grand Opera, the Minnesota Opera, and Milwaukee's Skylight Opera. Some of his favorite solo performances have been with the Minnesota Orchestra, the Saint Paul Chamber Orchestra, the Minnesota Chorale, and VocalEssence. He has been awarded Outstanding Performance in a Leading role for three consecutive years by the Spotlight Musical Theatre Awards of Hennepin Theatre Trust. He is also the creator and director of NDI Backyard Productions which ran for ten years in his Maple Grove backyard. Nathaniel is looking forward to graduating high school and pursuing a Musical Theatre degree in college.



JEWEL TONES

The Jewel Tones were founded in the winter of 2010 as a musical support group for three women who felt the premature onset of middle age. Out of that crisis emerged a vocal trio featuring tight

harmonies and whimsical lyrics. Marisa Squadrito Geisler currently sings with One Voice's small ensemble, OVation. She has arranged music, led small ensembles, and performed in cabarets for the past 10 years, and she recently wrote a song (her first!) that has become part of OVation's core repertoire. Britt Abel has been singing with One Voice Mixed Chorus for almost 14 years, including a three-plus year stint with OVation, Britt grew up singing and has performed with numerous choruses and community theaters throughout the years. Randi Rexroth is the Ensemble Coach for OVation and has also made several appearances with the Lili's Burlesque troupe, Beaujolais Sisters and the Sincere Sisters and just recently performed at The Dakota Bar in downtown Minneapolis. She is also a composer and arranger.



DARCY JUHL

Darcy is currently singing in her 25th consecutive season with One Voice Mixed Chorus and her second non consecutive 3 year term with OVation, the small ensemble of One Voice Mixed Chorus. Her stage roles include Dora Strang in *Equus*, Elizabeth in *The Crucible*, Leah in *Two By Two* and Domina in *A Funny Thing Happened on the Way to*

the Forum. Darcy and her partner of 14 years tied the knot legally in their home state of Iowa last month.



RACHAEL KROOG

Rachael is a versatile performer who got her start at Walt Disney World. Rachael has wowed audiences as a singer, MC, live auctioneer and voice over talent. She co-wrote and starred in a full length musical review called *Showstoppers*. *Kidpower with Rachael*, is her interactive children's show that highlights the message that kindness

is cool. She recorded her first original folk/rock CD Company with Deb Harley and Molly Kelly. The disc was featured in 50 Target Stores across the country. More: www.RachaelKroog.com.



ANDY KUULA

Andy began his professional career in the mid 1980s as a featured singer at Valleyfair Amusement Park. He has appeared in numerous musicals and shows throughout the years, including a guest appearance in the *Showstoppers* show. He is also an accomplished brass player, performing in several Drum & Bugle Corps dating back to 1975.

Andy performs and is a soloist with the renowned 140-voice Twin Cities Gay Men's Chorus.



Cabaret Performers



TOM LARSON

Twin Cities' native Tom Larson believes variety is an art form unto itself; he has made his living as a performer in vocal music in a variety of forms: solo, cabaret, opera, and ensemble. Highlights: Fred Waring's Pennsylvanians, Bobby McFerrin and Yo-Yo Ma, Nautilus Music Theater, Dale Warland Singers, Vocal Essence Ensemble Singers, Ivories cabaret, Big Top Chautauqua. He's performed in Mykonos, Paris, Rome, Stockholm, and on ten years of *A Prairie Home Companion*.



ANITA MCCOLLEY

Anita McColley began singing with the Roxxy Hall Band in 2002 and became the lead singer in 2004; Roxxy often introduces her as the "woman who doesn't need a microphone"! In 2005 Anita was a member of the One Voice Mixed Chorus soprano section, and she thinks that One Voicers are some of the most wonderful people she has ever met.

Anita teaches dog agility classes, and in her spare time she enjoys training three of her own dogs!



JODY MCCORMICK

Jody has been entertaining in the Twin Cities for many years, appearing with the Gene White band, A Touch of Class, and most recently, the Minnesota Zephyr. Along with leading the altos in the choral group Singers in Accord, Jody teaches music in the North St. Paul/Maplewood/Oakdale district and is married to the drummer, Brett Smith.



ONE VOICE MIXED CHORUS

One Voice Mixed Chorus is Minnesota's GLBTA community chorus with a mission of "building community and creating social change by raising our voices in song." One Voice

gave its debut concert in 1989, making it one of the first choruses in the country to bring together men and women from the gay, lesbian, bisexual, transgendered and allied communities. Under the direction of Jane Ramseyer Miller, One Voice is currently 80-voices strong and boasts of singing members from ages 17 to 71.



OVATION

OVation is a small group of One Voice singers under the direction of Randi Rexroth. OVation performs regularly in the community and at One Voice concerts. One Voice created OVation in order to provide an artistic

challenge for One Voice singers who wish to develop their voices and performance skills within an on-going group of singers, increase One Voice's continuing growth and visibility in the community and to offer a setting for nurturing and expanding leadership skills within One Voice.



JANE PLANK

Jane Plank started singing at such an early age she feels like she has always been in show business! Jane was recently chosen to be an interviewer/host of a documentary that is going to be filmed in Minnesota. She was a main character in the Disney Movie *The Mighty Ducks* and has numerous commercials and print modeling to her credit.

Jane is currently a performer, singer, songwriter and plays locally around the Twin Cities.



HOLLY SCHROEDER

Holly began performing in comedy and improvisation in Chicago at the Second City. She was last seen at the Ordway in Broadway's *Legendary Ladies* and as the Soap Star in *Menopause, the Musical*. As a cabaret artist, she's performed on the Queen Elizabeth II, at the Eugene O'Neill Theater Center and at other local

hangouts. Favorite musical theater roles include Trina in *Falsettos*, Grandma Who in *How The Grinch Stole Christmas* and Dot in *Honk!* Holly is also a commercial actress, voiceover talent and professional writer.



CRAIG SWYGMAN

Craig was a member of the Twin Cities Gay Men's Chorus for 14 years, and also a member of the small group Outloud!. Before that, he was a background vocalist for the band Incognito; he was also the lead vocalist, and background keyboardist for the band Circuit. Craig is VERY happy to be here tonight, and will be joined by Mark Haber, Andy

Kuula and Merlen Olson.



EMILY TINAWI

Emily Tinawi started singing when she was just a youngin'. In 2004, Emily won the National Choral Award and still has the certificate hanging in her room. Throughout college she delved more into theatre management, but managed to continue singing. Last year in Chicago, Emily sang in several cabarets as well as Second Unitarian's Sunday

choir. This is Emily's second season with One Voice. She is currently teaching fourth grade language arts at Achieve Language Academy in St. Paul, Minnesota.

Discover the Joy of Home Ownership
and an \$8,000 Tax Credit. :)



ANN LEVITON
Broker/Owner
Your OUT of the ordinary
Real Estate Specialist SM

612.270.5722

MAVRIK
REALTY

ann@realestatefairy.com
www.realestatefairy.com



Bringing Home Your Dreams

Joel Mugge
Broker Associate

I will donate 10% of
my net commissions to
One Voice Mixed Chorus
for any real estate referrals
from OVMC members,
family and friends.

THE MUGGE GROUP

612.384.9012

jmggge@cbburnet.com

www.joelmugge.com

Serving the
Real Estate Needs
of our Community
with Professionalism
and Integrity.



**COLDWELL
BANKER**

BURNET

Christine Hazel
RealtorTM

Coldwell Banker Burnet
Top 1% in Real Estate Sales
Minneapolis Lakes Office
3033 Excelsior Boulevard
Minneapolis, MN 55416

direct 612.915.2585
business 612.920.5605
fax 612.920.4706
chazel@cbburnet.com



Brian Luna

651-269-7648

www.FillmoreHouseBandB.com

CAROLEE A. LINDSEY, CPA
carolee@hdlcpas.com

hdl heimer/dixon/lindsey LTD
CERTIFIED PUBLIC ACCOUNTANTS

701 4TH AVENUE S, SUITE 320
MINNEAPOLIS, MN 55415
www.hdlcpas.com

PHONE 612-676-1040
FAX 612-676-1041

RSVP

vacations

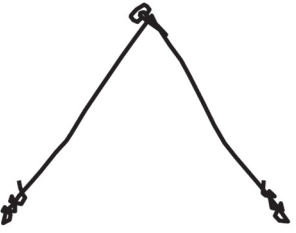
RSVP celebrates 25 years with three great cruise offerings!

October 30-November 6, 2010 | *Pride of America* from Honolulu

February 13-20, 2011 | *Nieuw Amsterdam* from Ft. Lauderdale

July 9-16, 2011 | *Nieuw Amsterdam* from Barcelona

www.rsvpvacations.com 800.328.RSVP



**The
BIG PICTURE**


Creativity is the Custom

Robin Keck, CPF
612.770.5950 Golden Valley
bigpictureframing@comcast.net

Home, Office, Commercial.
Paper art, 3-D, Stitchery, Repair...
Considerate Pricing, Flexible Hours.
Delivery & Installation Available.

**Ok, I do take
unisex barbering
to the extreme.**

Lyn-Lake Barbershop
Jayson Dallmann - Proprietor
612.822.6584
3019 Lyndale Avenue South
www.Lyn-LakeBarbershop.com
Hours: Tues. - Fri. 11am-7pm • Sat. 9am-4:30pm • Afterhours by Appointment



Mike Simon
Income Tax Specialist

Michael D. Cassidy, CFP®
Income Tax Specialist

p 612-822-7177 f 612-822-2163
www.rortax.com



Sheehan Corporate Center 4500 Park Glen Road, Suite 425
St. Louis Park, Minnesota 55416

*Protect Your Relationship
Protect Your Children*

Ann C. Viitala
Attorney at Law

Wills, Estate Planning,
Adoptions, Probate, and
Domestic Partner Agreements
612-305-2959
*Providing Legal Services to
Our Community Since 1984*



Stagetime Productions

**952-835-1218 office
763-360-7750 cell**

shannon@stagetimeproductions.com
www.stagetimeproductions.com



**Shannon Pierce
Event Producer**

Show producer for the following non-profit galas & events:

